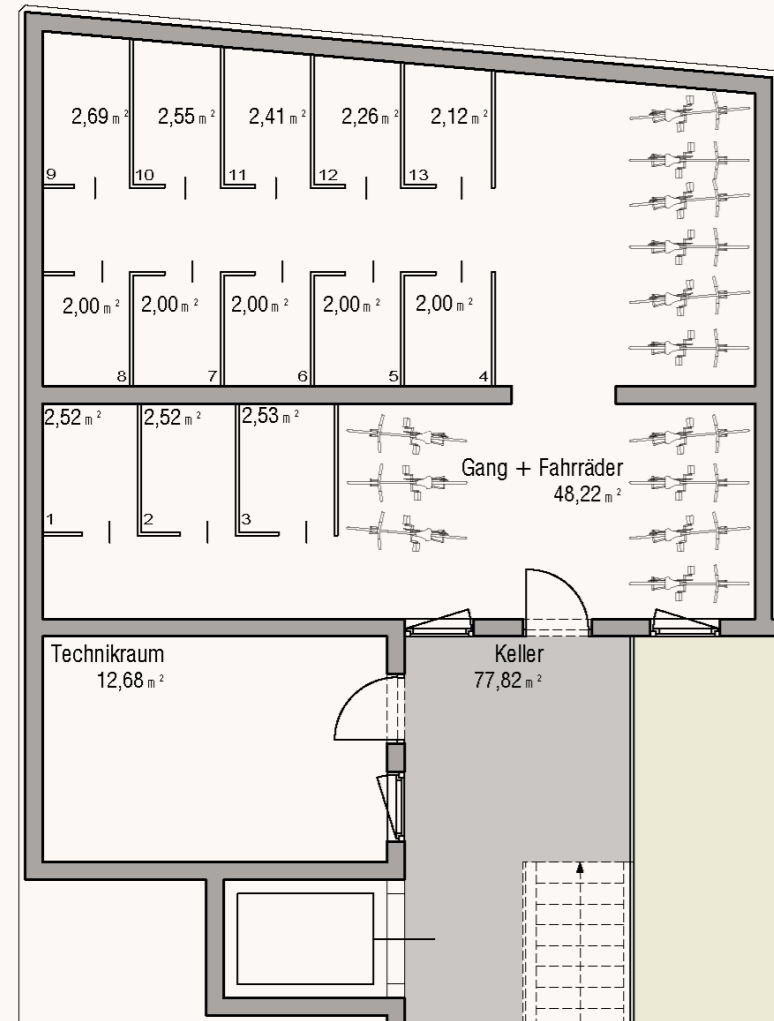


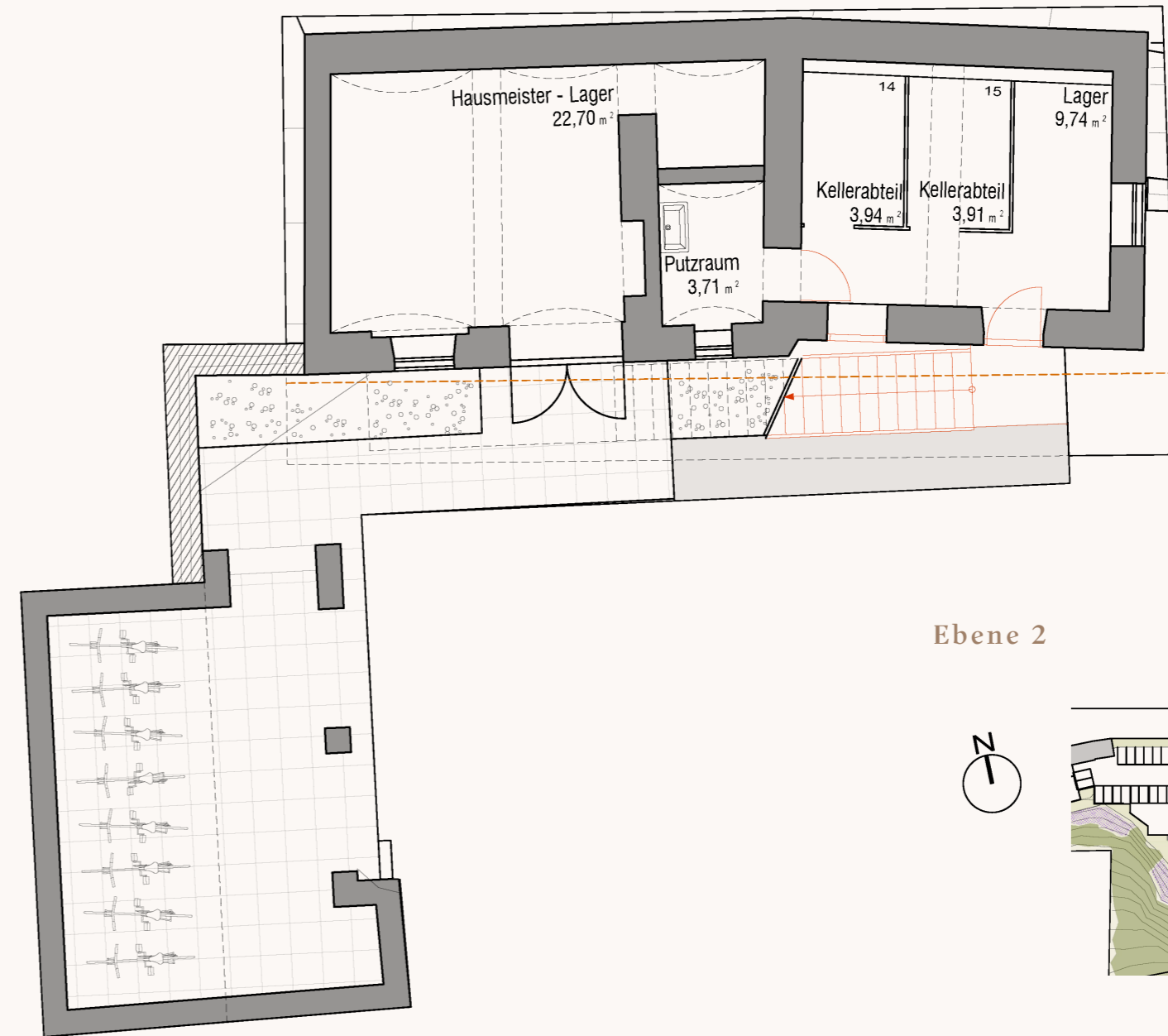
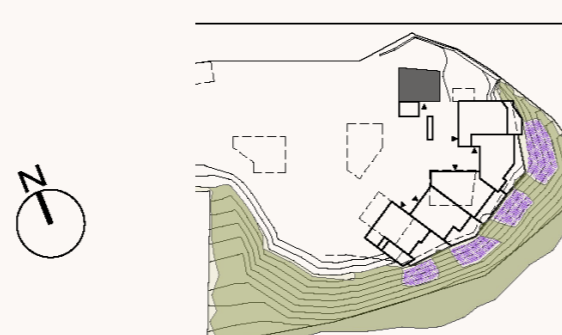
Verkaufspläne

Tibitsch 20 | 9212 Techelsberg am Wörther See

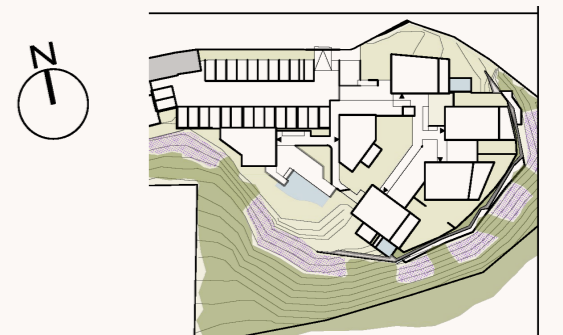
Keller



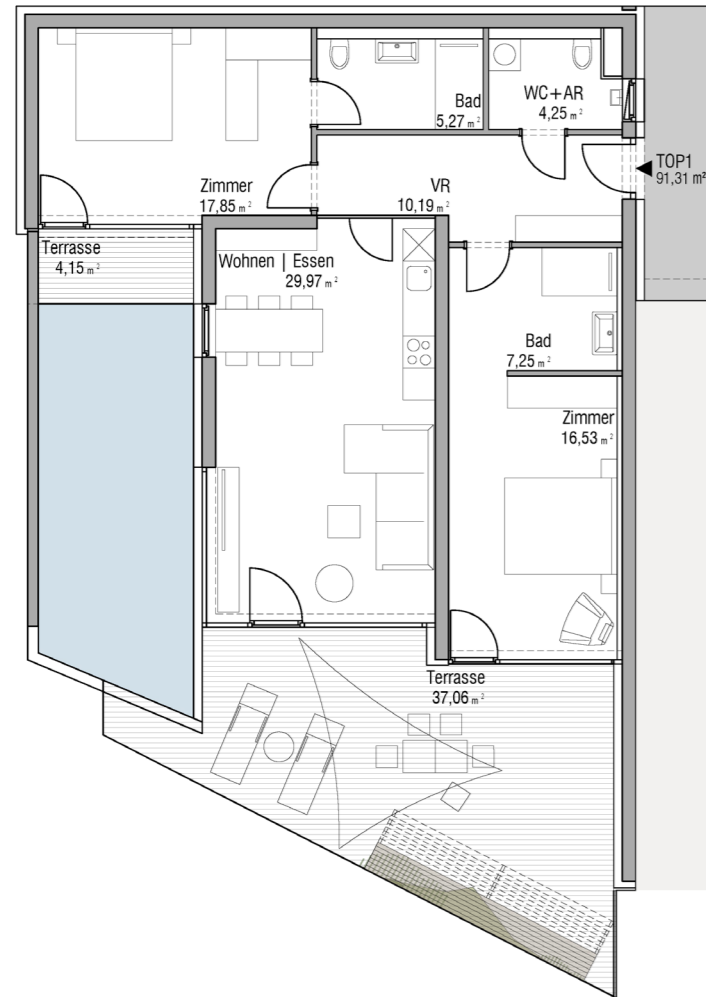
Ebene 1
Nettonutzfläche: 90,05 m²
Lift: ja



Ebene 2

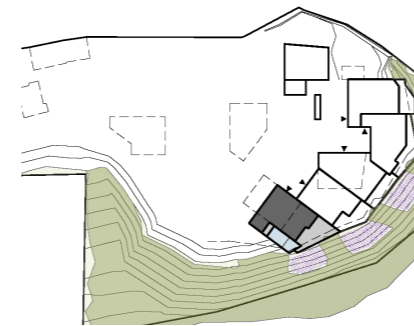


Top 1

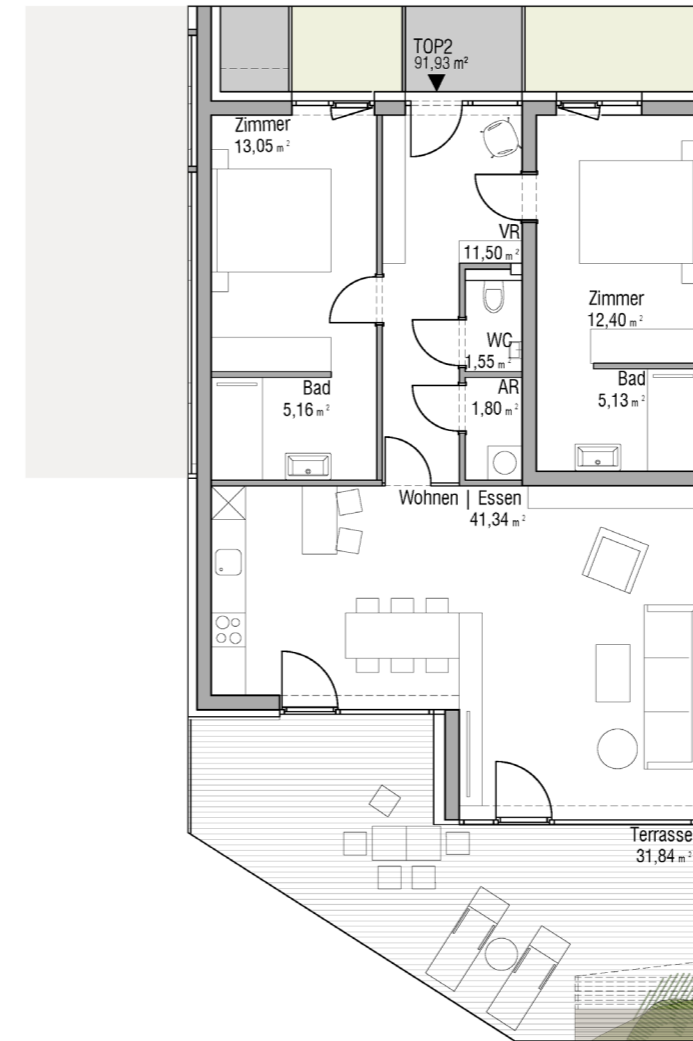


Ebene 1

Zimmer: 3
Nettonutzfläche: 91,31 m²
Terrasse: 41,21 m²
Lift: ja

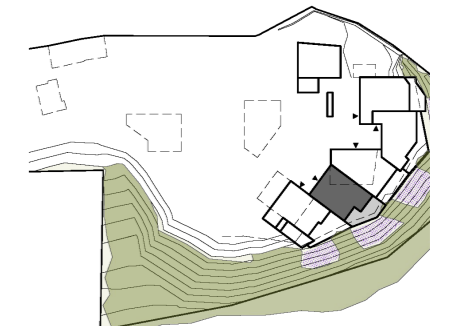


Top 2

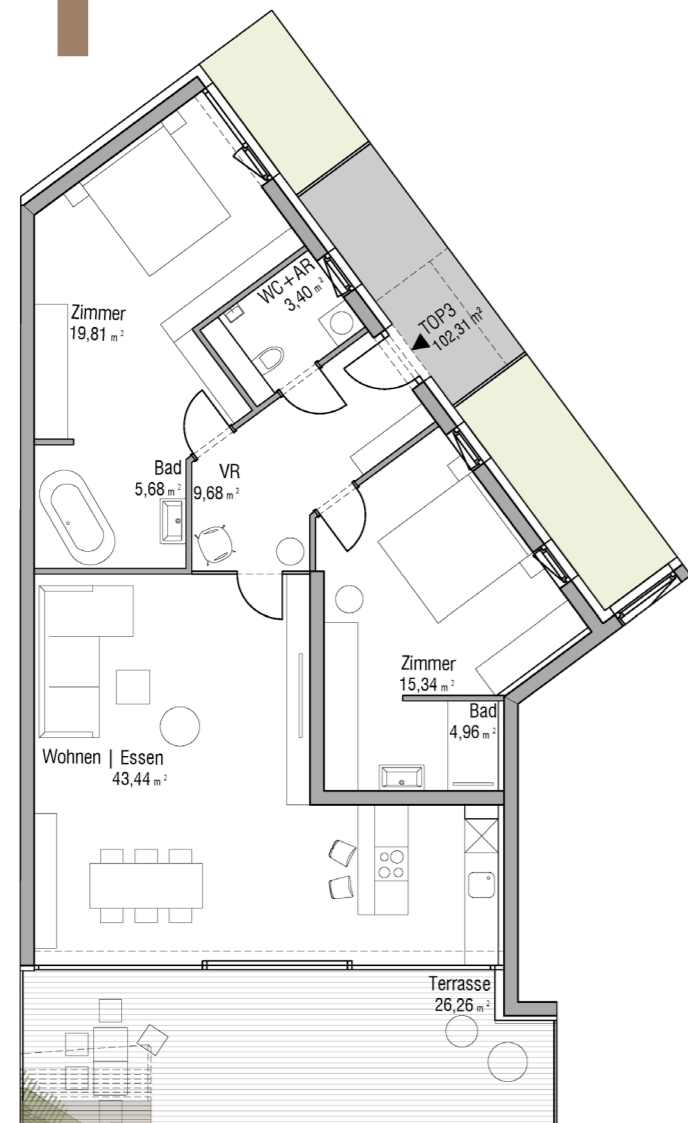


Ebene 1

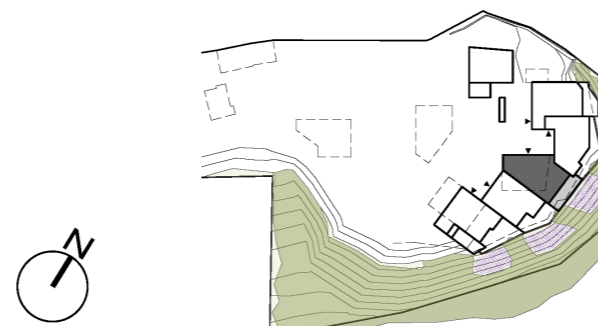
Zimmer: 3
Nettonutzfläche: 91,93 m²
Terrasse: 31,84 m²
Lift: ja



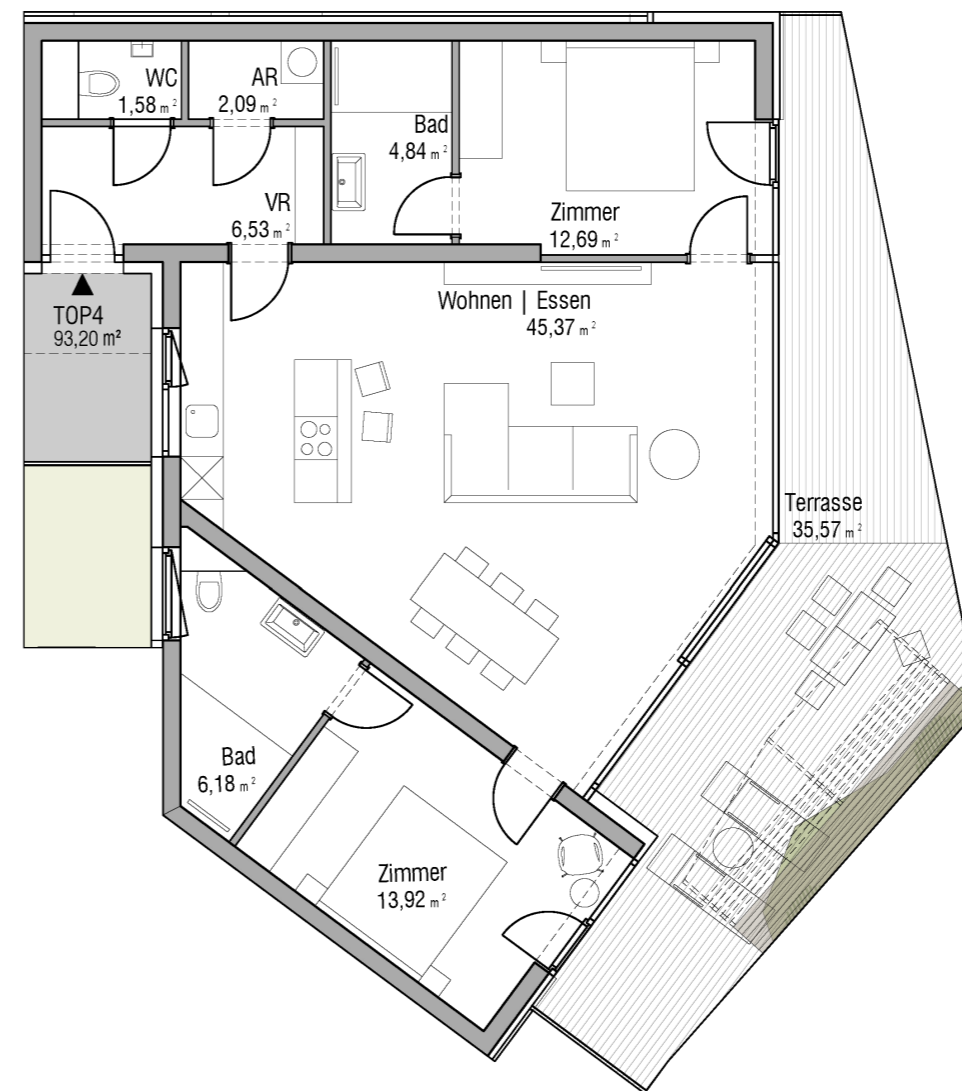
Top 3



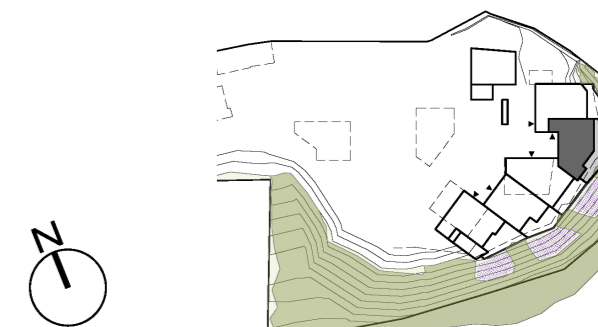
Ebene 1
Zimmer: 3
Nettonutzfläche: 102,31 m²
Terrasse: 26,26 m²
Lift: ja



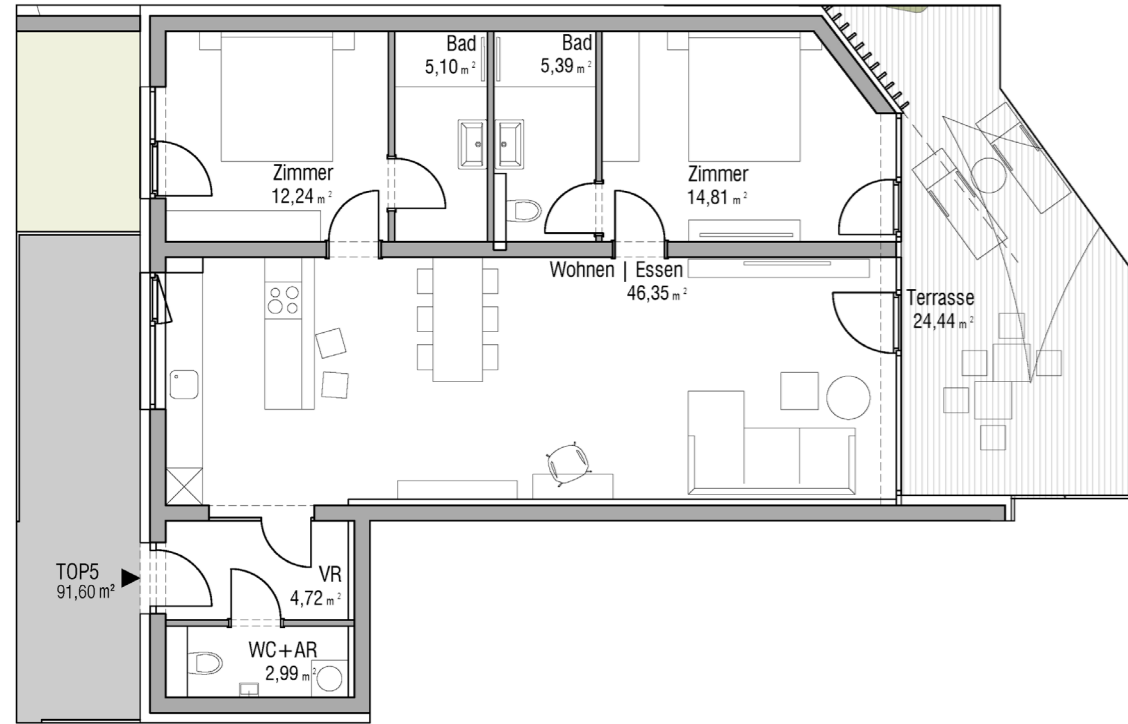
Top 4



Ebene 1
Zimmer: 3
Nettonutzfläche: 93,20 m²
Terrasse: 35,57 m²
Lift: ja



Top 5

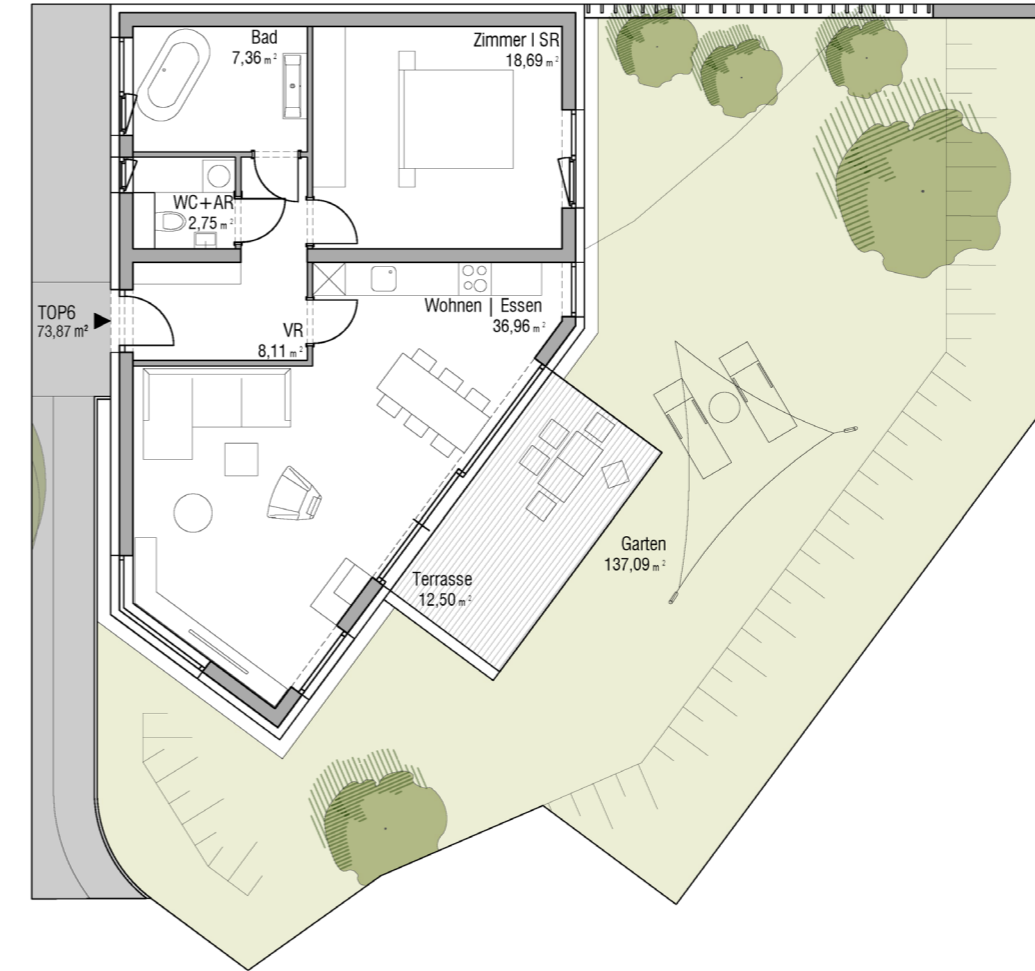


Ebene 1

Zimmer: 3
Nettonutzfläche: 91,60 m²
Terrasse: 24,44 m²
Lift: ja

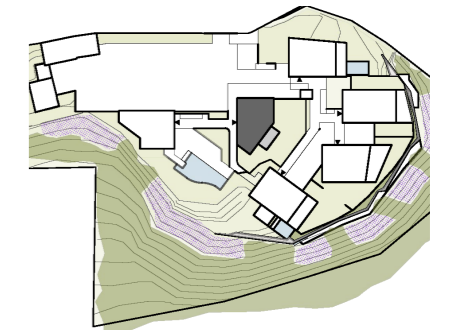


Top 6

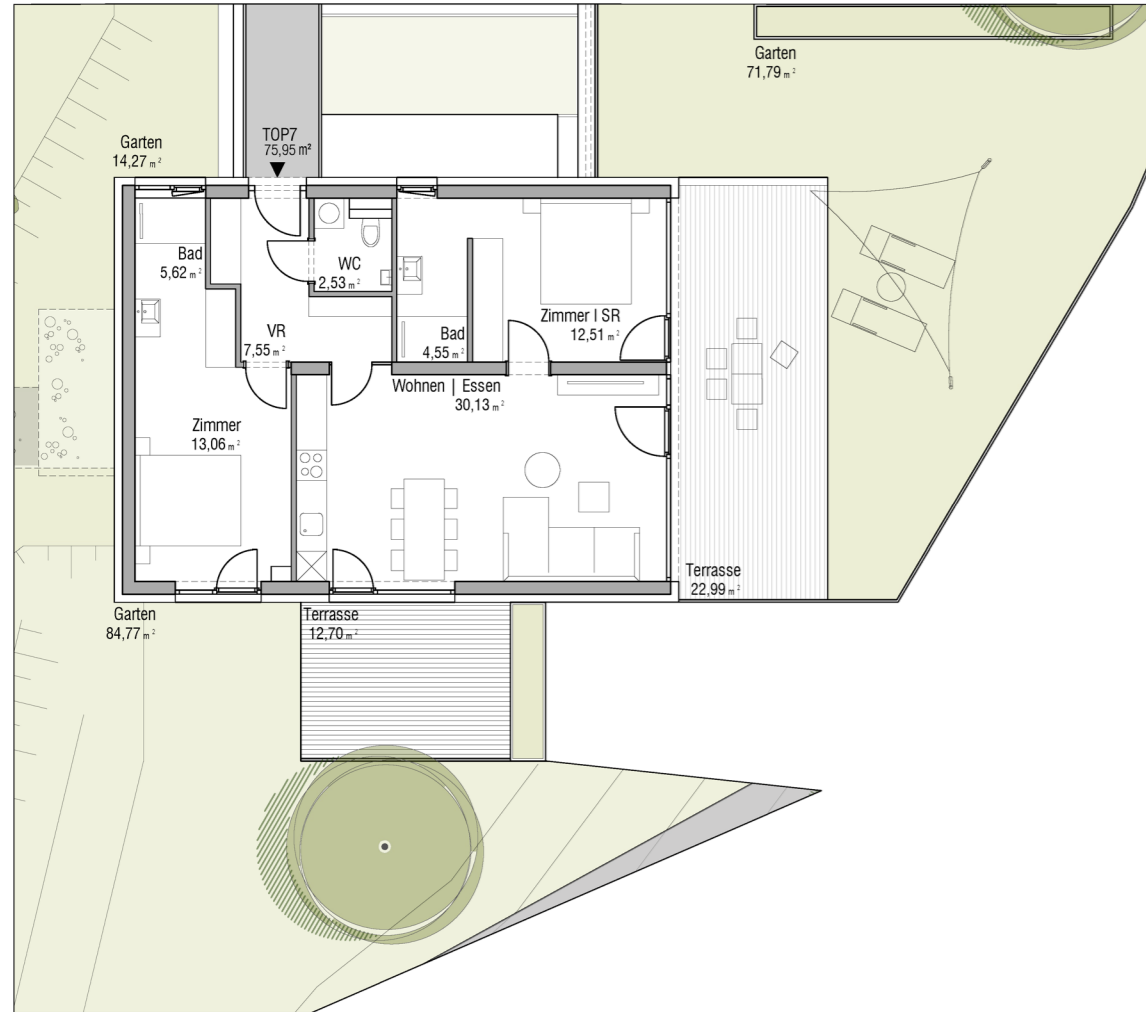


Ebene 1

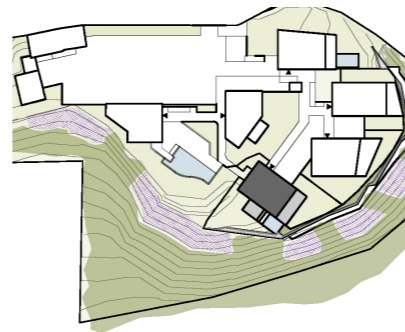
Zimmer: 2
Nettonutzfläche: 73,87 m²
Terrasse: 12,50 m²
Garten: 137,09 m²
Zugang: ebenerdig



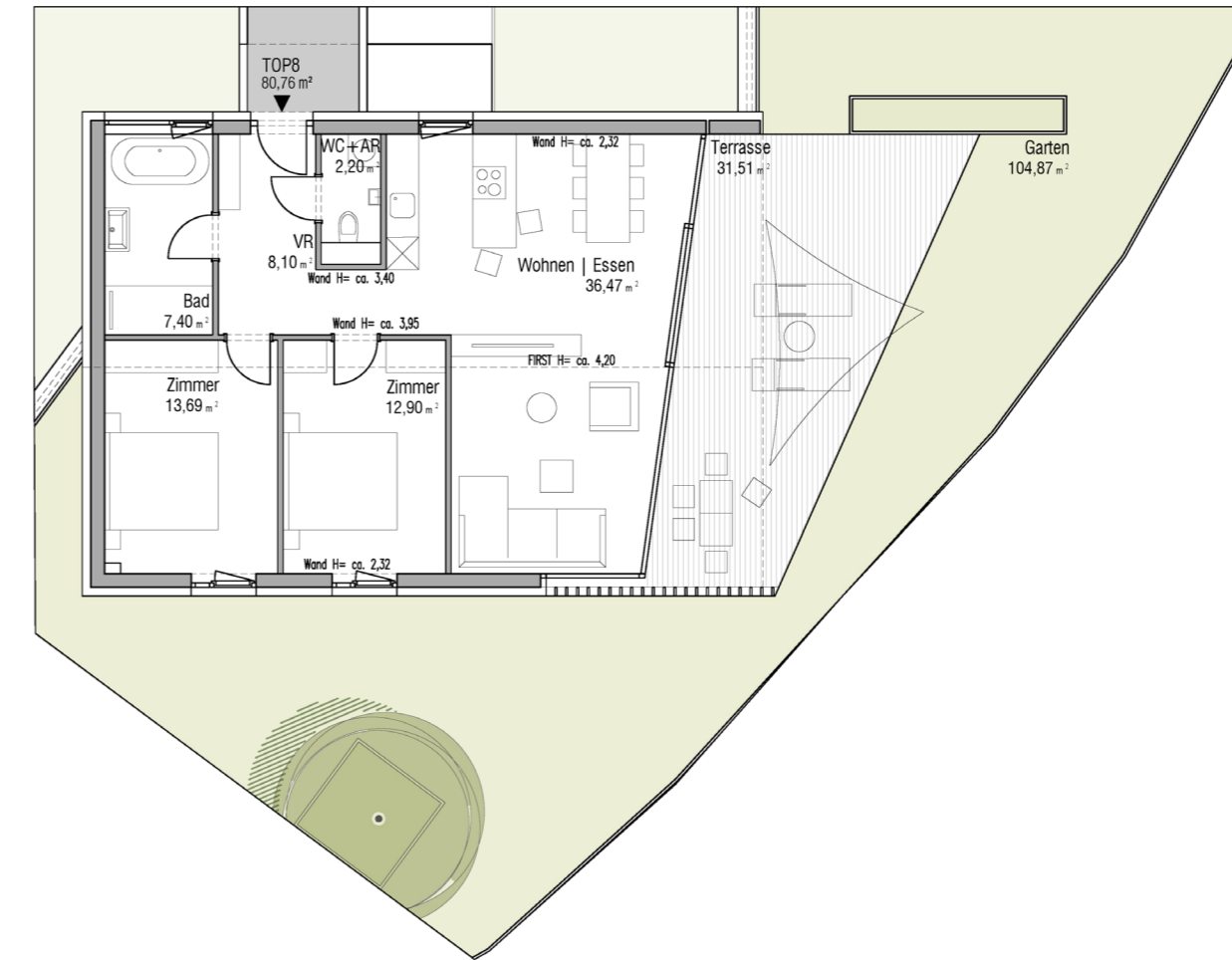
Top 7



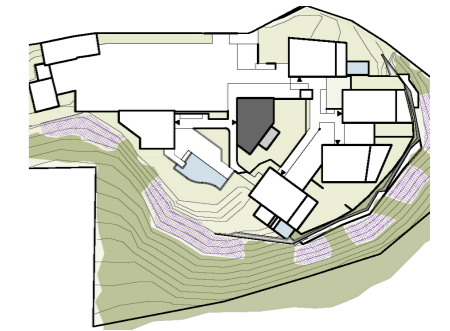
Ebene 2
Zimmer: 3
Nettonutzfläche: 75,95 m²
Terrasse: 35,69 m²
Garten: 170,83 m²
Lift: ja



Top 8



Ebene 2
Zimmer: 3
Nettonutzfläche: 80,76 m²
Terrasse: 31,51 m²
Garten: 104,87 m²
Lift: ja



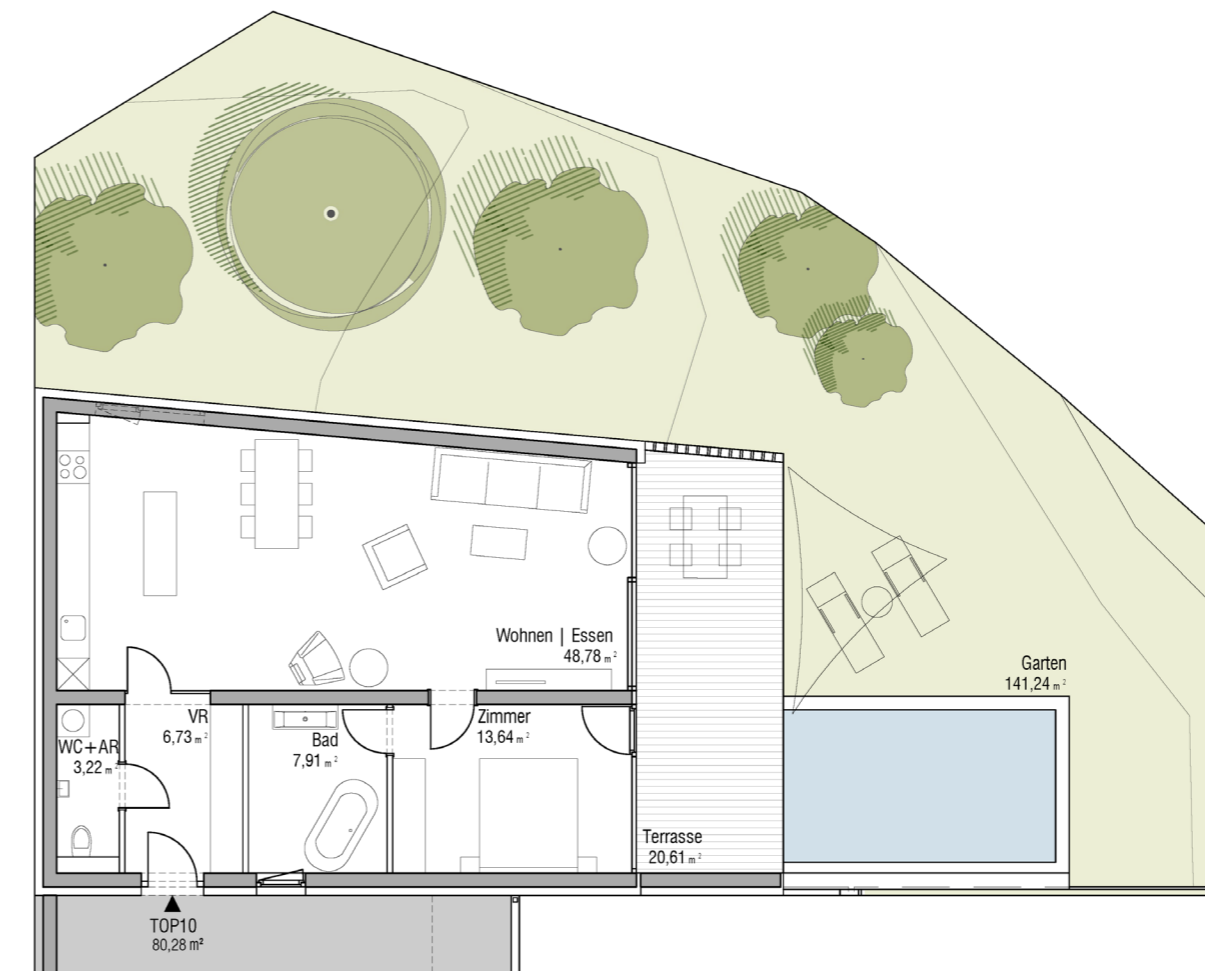
Top 9



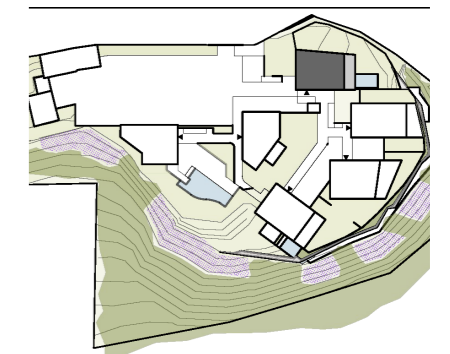
Ebene 2
Zimmer: 3
Nettonutzfläche: 82,76 m²
Terrasse: 22,93 m²
Garten: 68,98 m²
Lift: ja



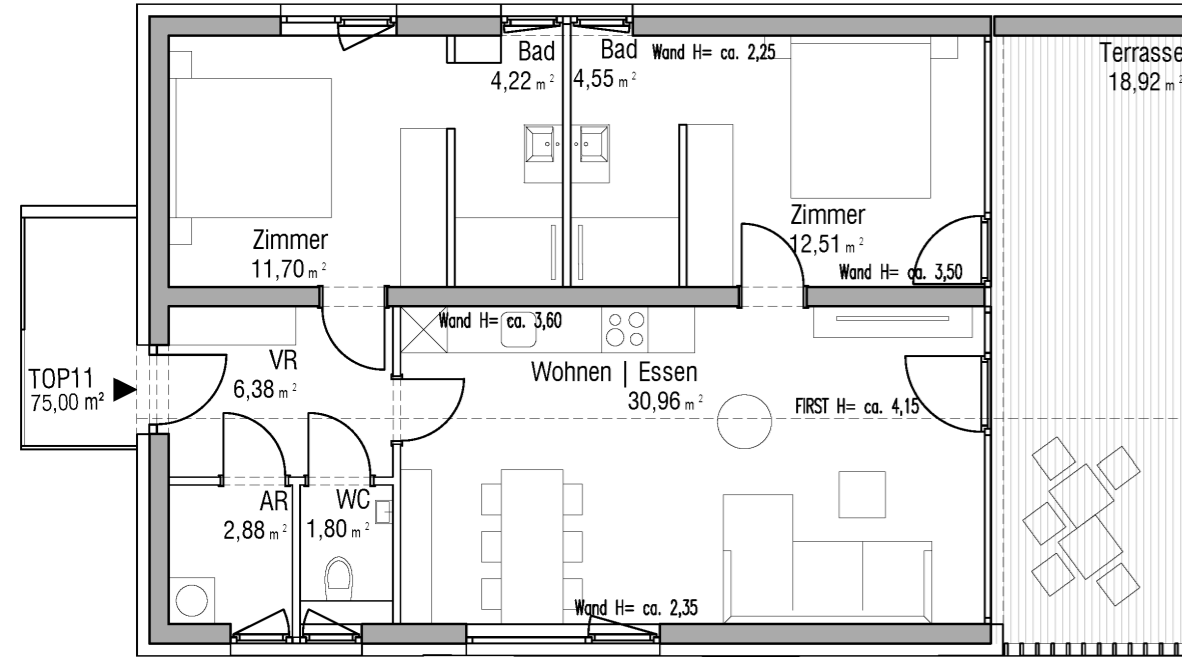
Top 10



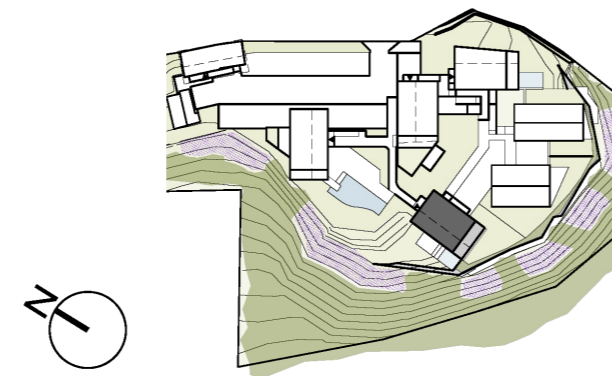
Ebene 2
Zimmer: 2
Nettonutzfläche: 80,28 m²
Terrasse: 20,61 m²
Garten: 141,24 m²
Lift: ja



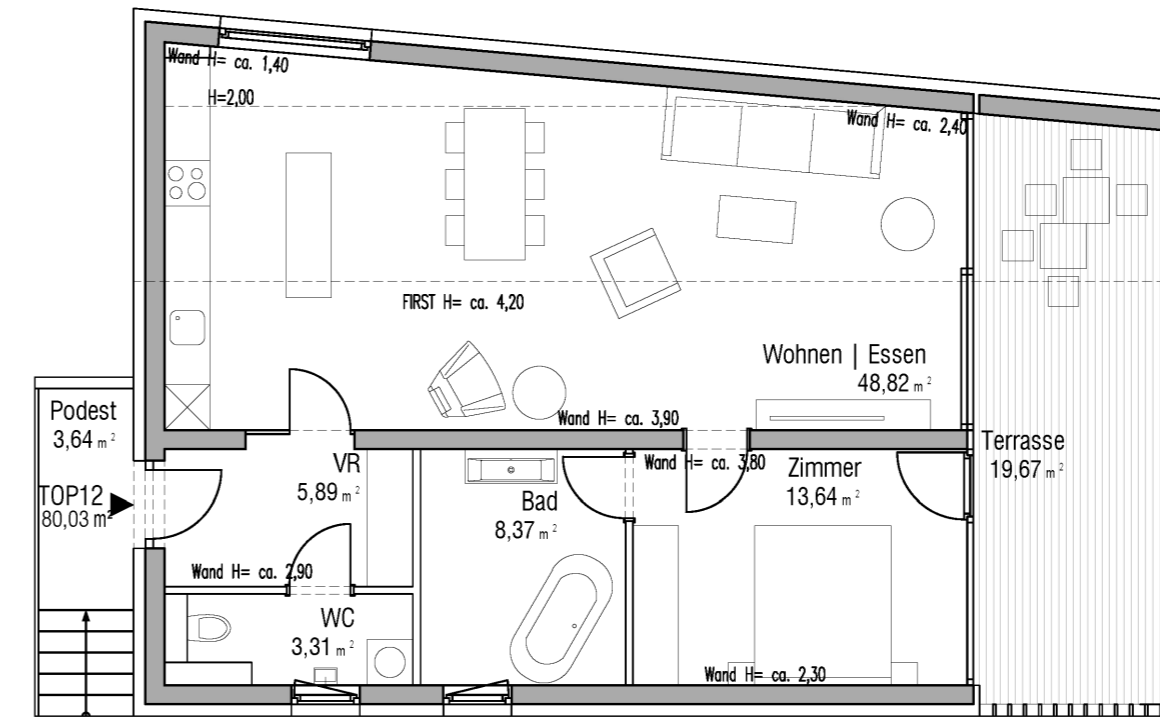
Top 11



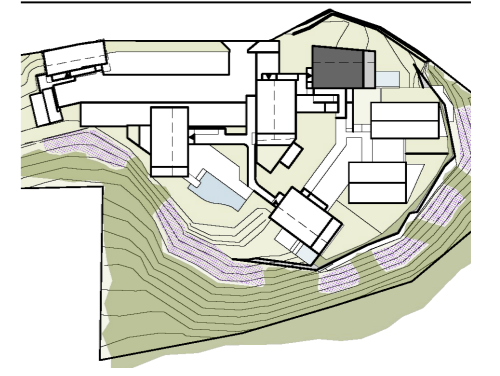
Ebene 3
Zimmer: 3
Nettonutzfläche: 75,00 m²
Terrasse: 18,92 m²
Zugang: ebenerdig



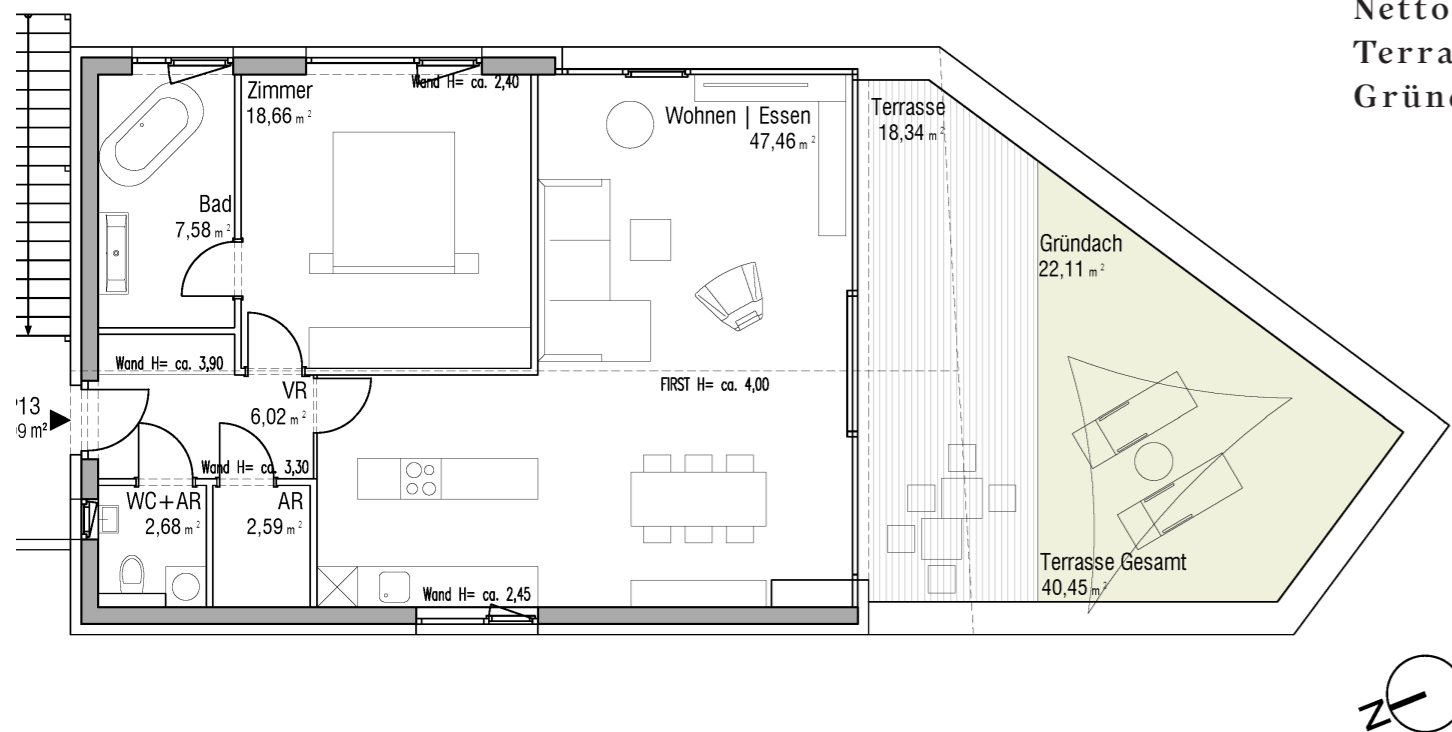
Top 12



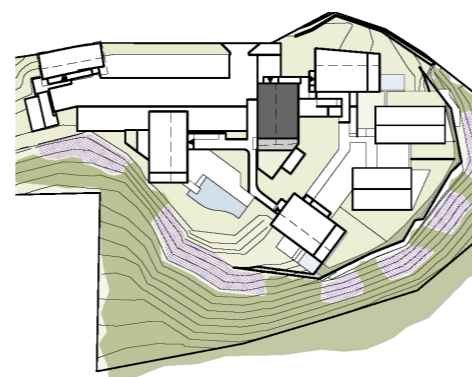
Ebene 3
Zimmer: 2
Nettonutzfläche: 80,03 m²
Terrasse: 19,67 m²



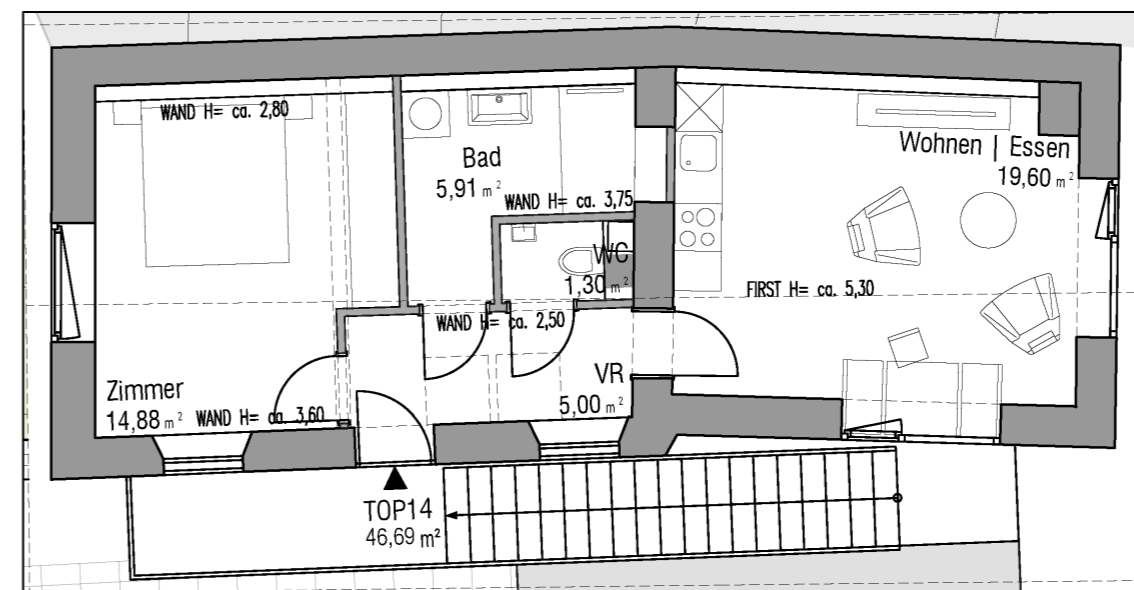
Top 13



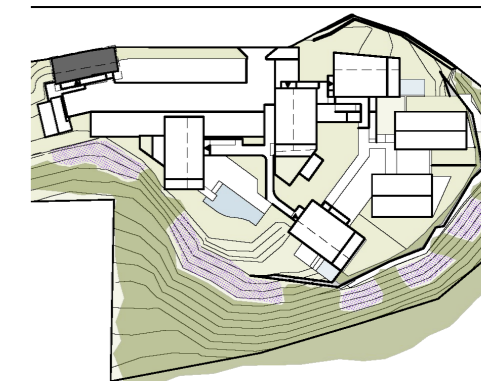
Ebene 3
Zimmer: 2
Nettonutzfläche: 84,99 m²
Terrasse: 18,34 m²
Gründach: 22,11 m²



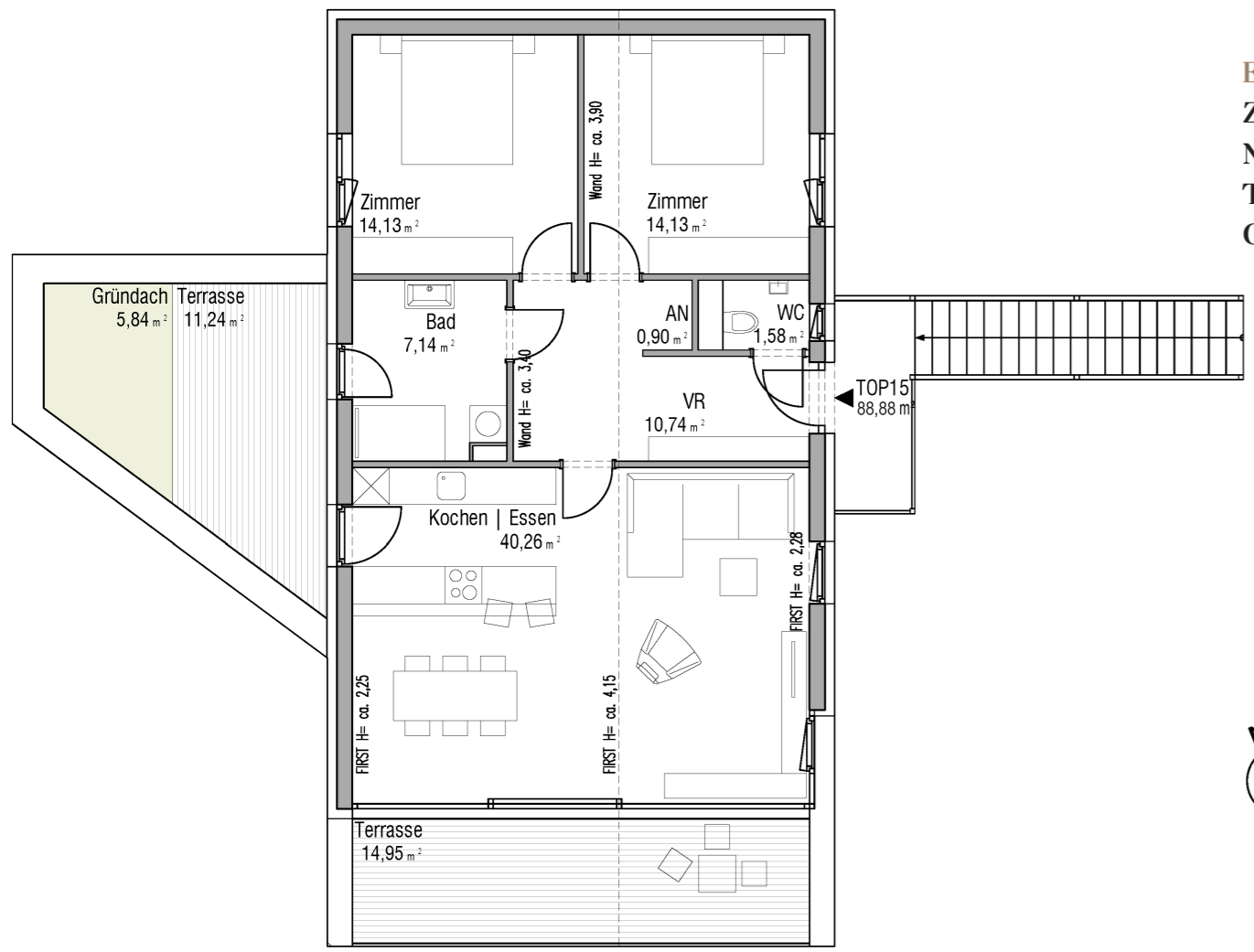
Top 14



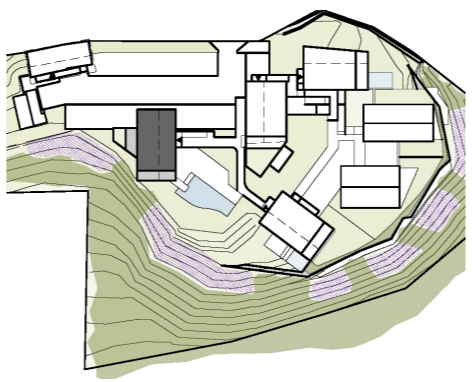
Ebene 3
Zimmer: 2
Nettonutzfläche: 46,69 m²



Top 15



Ebene 3
Zimmer: 3
Nettonutzfläche: 88,88 m²
Terrasse: 26,19 m²
Gründach: 5,84 m²





WEGRAZ Gesellschaft für Stadterneuerung und Assanierung m.b.H.
Leechgasse 29 | 8010 Graz | +43 316 38 49 09 | office@wegraz.at | www.wegraz.at